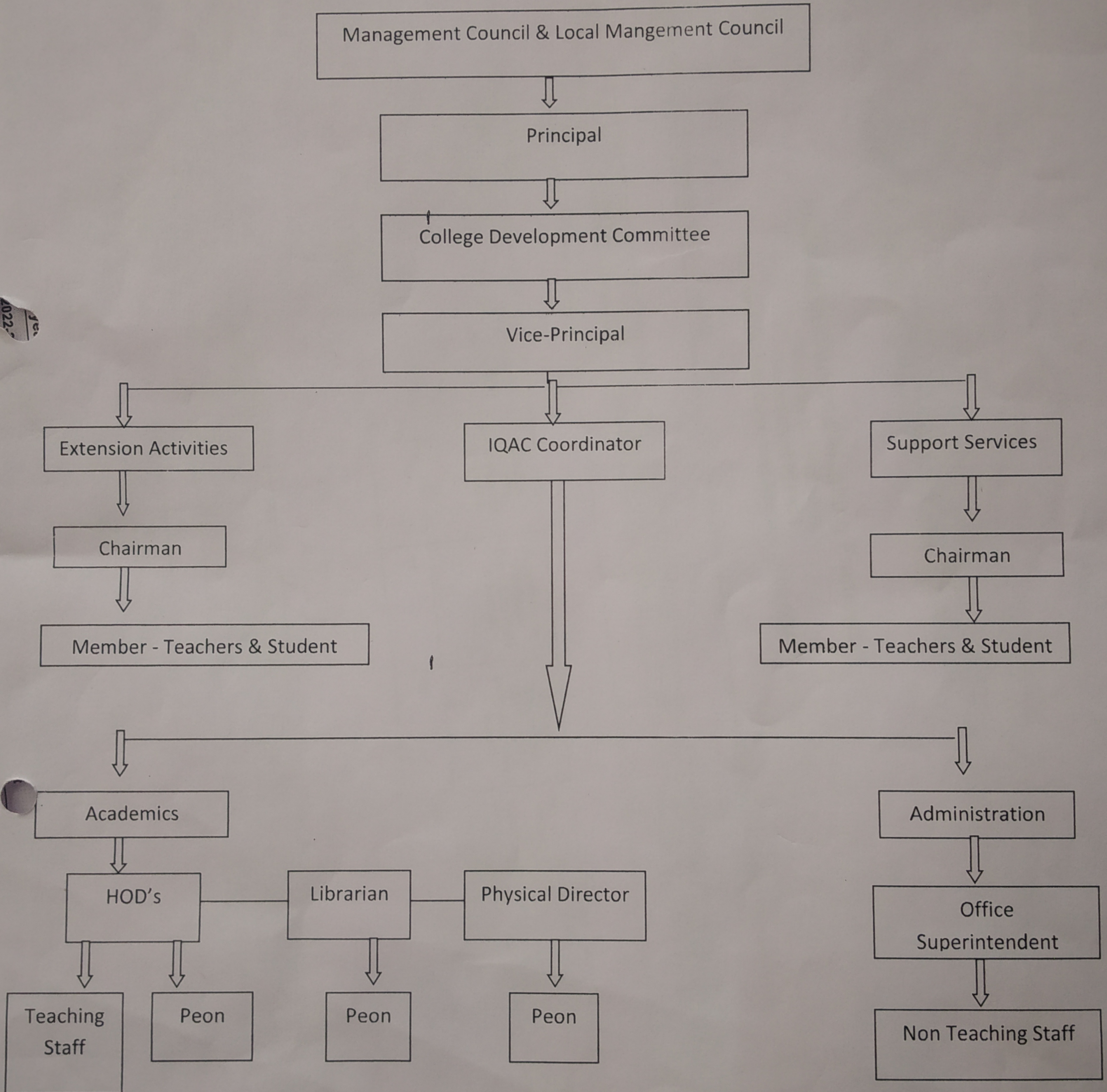


Navgan Shikshan Sanstha Rajuri's
Arts & Commerce College, Parli Vaijnath

The Internal organizational structure



PRINCIPAL
N.S.S.R's Arts.Comm.&Sci.
College, Parli (V.) Dist. Beed.

Annual Capital Expenditure on Academic Activities
28681 (twenty eight thousand six hundred eighty one)
0 (zero)